



## **TECHNICAL SPECIFICATION**

### **Royal Kor-Flo® PVC Profile Pipe**

#### **SCOPE**

This specification covers the requirements for Royal Kor-Flo Profile PVC (polyvinyl chloride) gravity sewer pipe with gasketed bell and spigot joints. Nominal sizes 12" to 24", 30" and 36" are manufactured to meet the requirements of the American Society for Testing and Materials (ASTM) standard F794 and are certified to Canadian Standards Association (CSA) Standard B182.4 (excluding 15").

#### **MATERIALS**

The pipe is manufactured from virgin PVC compound meeting the cell classification requirements of 12454 as defined by the American Society of Testing and Materials (ASTM) Standard D1784: Standard Specification for Rigid PVC Compounds and CPVC Compounds.

#### **MARKING**

Pipe markings are as specified in CSA B182.4 and ASTM F794.

#### **PIPE**

The pipe is manufactured for use in gravity flow sanitary and storm sewer and has a minimum pipe stiffness value of 46 psi (320 kPa) when tested in accordance with ASTM D2412, Standard Test Method for Determination of External Loading. Standard length of pipe is 4.0m plus the bell.

#### **GASKETS**

The gaskets conform to the requirements of ASTM F477: Standard Specification for Elastomeric Seals (Gaskets) for Joining Plastic Pipe. They are manufactured from Butadiene Styrene rubber (SBR) and meet the requirements of ASTM D3212, Standard Specifications for Joints for Drain and Sewer Plastic Pipes Using Flexible Elastomeric Seals.

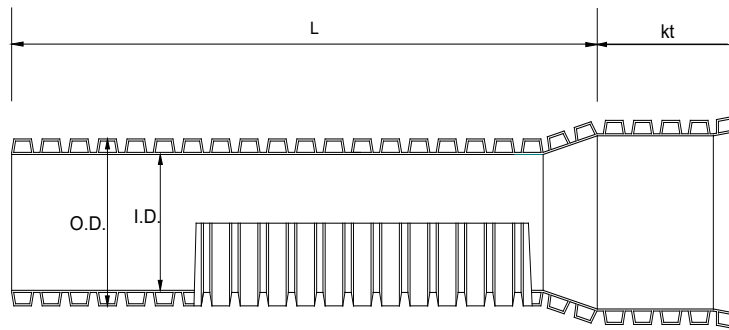
#### **TEST REQUIREMENTS**

Quality testing is as per Royal's Quality Control program and in accordance with CSA B182.4 and ASTM F794.

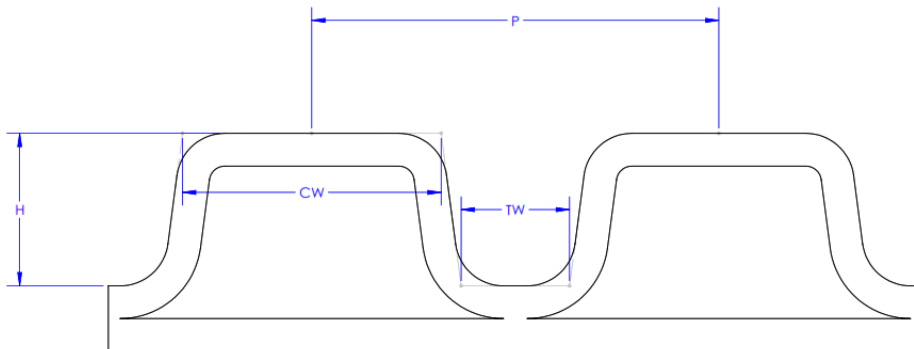


## PIPE DIMENSIONS

Nominal Size in	Average Outside Diameter (OD) in	Average Inside Diameter (ID) in	Min. Bell Depth ( $k_t$ ) in
12	12.483 – 12.840	11.703 – 11.772	8.0
15	15.665 - 15.720	14.329 – 14.419	8.5
18	19.150 - 19.200	17.594 – 17.705	9.0
21	22.530 – 22.630	20.691 – 20.809	8.5
24	25.535 – 25.635	23.430 – 23.570	10.5
30	32.085 – 32.215	29.409 – 29.591	12.5
36	38.657 – 38.867	35.394 – 35.606	13.0



## CORRUGATION DIMENSIONS



Part	Pitch (P)	Crest Width (CW)	Trough Width (TW)	Height (H)
Kor-Flo 12"	0.995	0.632	0.265	0.372
Kor-Flo 18"	1.327	0.913	0.268	0.552
Kor-Flo 24"	1.990	1.411	0.354	0.853
Kor-Flo 30"	1.990	1.350	0.356	1.078
Kor-Flo 36"	2.653	1.816	0.472	1.387