



Certa-Lok® Yelomine® Specifications & Dimensions

Restrained Joint PVC Pressure Piping System

GENERAL INFORMATION

The Certa-Lok Restrained Joint System provides a noncorrosive restrained joint by utilizing precision-machined grooves on the pipe and in the bell/coupling that, when aligned, allow a spline to be inserted, locking the pipe and bell/coupling together. A flexible elastomeric seal (O-ring) in the coupling provides a hydraulic seal.

Certa-Lok Yelomine pipe and couplings are manufactured from our specially formulated Yelomine PVC compound that contains impact modifiers and ultraviolet inhibitors to give higher impact strength over an extended period of time. Our Yelomine PVC compound meets or exceeds cell classification 12454 per ASTM D1784.

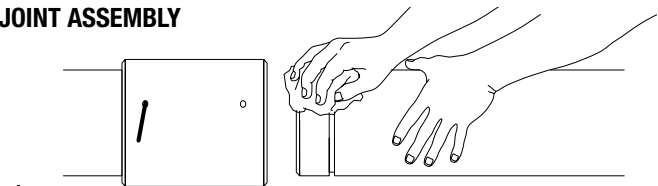
Short Form Specifications	
Pipe Standard:	ASTM D2241
Diameter Standard:	Iron Pipe Size (IPS)
Standard Lay Length:	20'
Pipe Compound:	ASTM D1784 Class 12454 with Yelomine Technology
Pipe Joint Std.:	ASTM D3139
Gasket Standard:	ASMT F477
Installation Std.:	ASTM D2774

Applications	Potable Water	Waste-water	Reclaimed Water
Color:	Yellow	Green	Purple
Certifications:	NSF 61	None	None

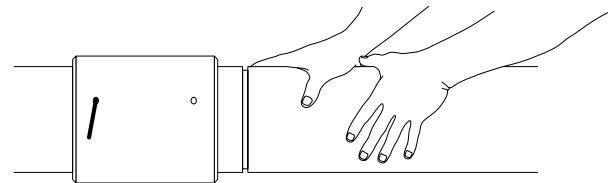
Table of Contents

Bending	2
Restrained Joint Integral Bell (RJIB).....	4
Restrained Joint (RJ).....	5
Nipples	7
Fluid-Tite, High-Deflection, Stop & Repair Couplings.....	9
Expansion & Tapped Couplings.....	10
Transition Fittings.....	12
Wyes & Tees	16
Elbows.....	17
Sweeps.....	18

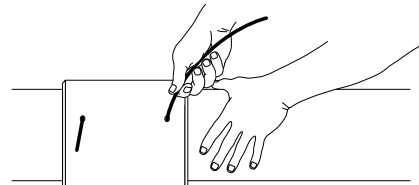
JOINT ASSEMBLY



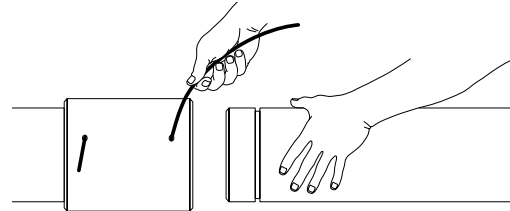
1
Clean and adequately lubricate pipe spigot and O-ring gasket sealing surface.



2
Arrange pipe and coupling such that they are in straight alignment. Insert pipe into Certa-Lok bell/coupling by applying evenly distributed, continuous pressure across the joint. Pipe and bell/coupling should be protected from damage during joint assembly.



3
The spline is then inserted through the insertion hole in the bell/coupling, until it is fully seated. This securely locks the joint. The gasket provides a hydraulic seal.



4
When needed, the joint can be disassembled and reused.
Note: Disassembly of permanent joints may require substantial force. O-rings and splines should be inspected upon disassembly and replaced if damaged for both non-permanent and permanent style joints.





Certa-Lok® Yelomine® Specifications & Dimensions

Restrained Joint PVC Pressure Piping System

CERTIFICATION OF QUALITY

- 1) The Yelomine formulation will contain sufficient impact modifier to demonstrate approximately twice the Izod impact level of conventional white PVC pipe, and shall meet or exceed the below listed plant production specifications.
- 2) The Yelomine formulation will contain a sufficient amount of high-purity TiO2 to prevent surface discoloration and to provide superior long-term UV protection against impact strength degradation.
- 3) All Certa-Lok Yelomine pipe will be manufactured at NAPCO's Lodi, California, and McPherson, Kansas extrusion plants. All fabricated fittings will be manufactured at NAPCO's McPherson, KS, fabrication facility.

NON-PERMANENT USE & PERMANENT USE—CERTA-LOK JOINTS

Non-Permanent O-rings have a slightly reduced cross-section for easy assembly and disassembly. Permanent Use O-rings have a slightly larger cross-section and are not designed for disassembly.

Non-Permanent Use Certa-Lok Joints, which utilize a Teflon-coated O-ring, are typically used in above-ground, exposed installations such as mining, irrigation, temporary bypass or slurry lines or any installation that will require disassembly and reuse.

CAUTION: Non-Permanent Use Certa-Lok joints should not be used in buried or submerged applications.

Permanent Use Certa-Lok Joints utilize a Teflon-coated O-ring with a slightly larger cross-section. Disassembly can be achieved, but can be extremely difficult depending on the diameter of the piping system. Permanent Use Certa-Lok Joints are intended for use in all installations which do not require disassembly during the service life of the system. Applications include buried installations, bridge, river and road crossings, and all installations in which joints are subjected to long-term misalignment due to external loads.

If in doubt as to which coupling system, Non-Permanent or Permanent Use, is best suited for your application, contact NAPCO Technical Services at technical@napcopipe.com or 855-624-7473 option 3.

NSF INTERNATIONAL LISTINGS

NSF-14 establishes minimum physical, performance, health effect, quality assurance, marking and record keeping requirements for plastic piping products. Similarly, NSF-61 specifically covers requirements pertaining to the environmental aspects of piping used for potable drinking water. A plastic piping product that has an NSF-14 listing must (by default) also have an NSF-61 listing. In contrast, a product that is NSF-61 listed (for use in potable water applications) may not necessarily have an NSF-14 "performance specification" listing.

NSF 14 Compliant Products Include:

- Certa-Lok Yelomine restrained joint pipe and couplings (RJ) up to class 250 PSI.

NSF 61 Compliant Products Include:

- Certa-Lok Yelomine restrained joint pipe and couplings (RJ) up to class 315 PSI.
- Certa-Lok Yelomine restrained joint integral bell pipe (RJIB).
- Certa-Lok 16" fiber-wound couplings.

PIPE IMPACT PRODUCTION SPECIFICATIONS			
Nom. Size (in.)	SDR 26 (ft.-lbs.)	SDR 21 (ft.-lbs.)	SDR 17 & 13.5 (ft.-lbs.)
2"	—	—	170
3"	—	—	245
4"	210	255	320
6"	305	380	470
8"	400	495	610
10"	500	530	—
12"	500	530	—
14"	500	530	—
16"	500	530	—

NOMINAL PROPERTY VALUES		
Pipe Property	Test Method	Value
Izod Impact	ASTM D256	1.15 ft.-lbs./in. of notch
Tensile Strength	ASTM D638	7,000 psi
Modulus of Elasticity	ASTM D638	400,000 psi
Deflection Temperature	ASTM D648	158°F
Flammability	ASTM D635	Self-extinguishing





Certa-Lok® Yelomine® Specifications & Dimensions

Restrained Joint PVC Pressure Piping System

DEFINITIONS & ABBREVIATIONS

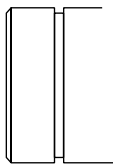
C/L	Certa-Lok
C/LM	Certa-Lok Grooved (male) Pipe End
FIPT	IPS (female) Pipe Thread (NPT)
SW	Solvent Weld
C/LF	Certa-Lok Gasketed (female)
MIPT	IPS (male) Pipe Thread (NPT)
SWBE	Solvent Weld Bell End
PE	Plain End
HP	High Pressure
DT	Double Tapped
RJIB	Restrained Joint Integral Bell
SMG	Standard Metal Groove

FLEXIBILITY

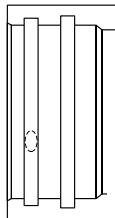
Certa-Lok Yelomine can bend easily around many obstructions, typically reducing the number of fittings required. The pipe should not be bent to a lesser (tighter) radius than shown.

Pipe Diameter	Minimum Bend Radius (ft.)	Offset/20 ft. (in.)
2"	40	59
3"	58	41
4"	75	32
6"	110	22
8"	144	17
10"	179	13
12"	213	11
14"	233	10
16"	267	9

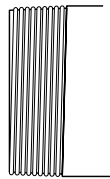
C/LM (male)



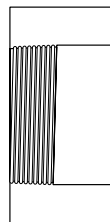
C/LF (female)



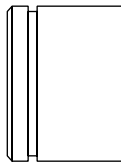
MIPT



FIPT



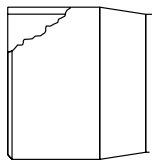
SMG



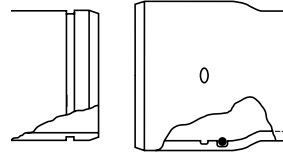
PE



SWBE



RJIB





Certa-Lok® Yelomine® Specifications & Dimensions Restrained Joint PVC Pressure Piping System

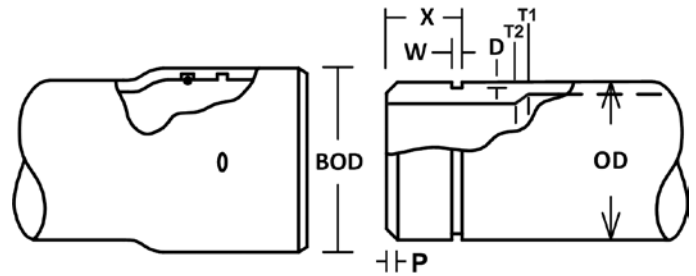


D2241/RJIB CERTA-LOK YELOMINE PIPE DIMENSIONS

Nom. Size	Outside Diameter (OD)	SDR	Pipe							
			Min. Wall Thickness (T1)	Flow Internal Diameter (ID)	X	W	D	P	BOD	Weight (lb/ft)
4"	4.500	21	0.214	4.072	3.000	0.375	0.135	0.241	5.112	1.9
		17	0.265	3.970					5.264	2.3
6"	6.625	21	0.316	5.993	3.000	0.375	0.135	0.241	7.500	4.1
		17	0.390	5.845					7.737	4.9
8"	8.625	21	0.410	7.805	3.163	0.500	0.145	0.634	9.750	6.7

Notes:

1. These dimensions are for estimating purposes only. All dimensions are in inches unless otherwise specified.
2. SDR = Standard Dimension Ratio
3. ASTM Pressure Class @ 73°F and includes 2:1 safety factor.
4. Maximum Pull Force based on actual testing and includes 2:1 safety factor.
5. Internal diameter calculated using nominal outside diameter and minimum wall thickness.
6. Pipe spigot has thickened wall to provide additional joint strength. Ask us for assistance with mandrel sizing if needed.



D2241/RJIB CERTA-LOK YELOMINE CERTA-LOK ACCESSORIES

Application	Nom. Size	Splines				Gaskets			
		Material	Size	Length	Part Number	Material	Shape	Size	Part Number
Permanent Standard*	4"	Nylon	0.250 Dia	18	S4518RN0	NBR	Round	0.240	OR040YMPI
	6"	Nylon	0.250 Dia	24	S0624RN0	NBR	Round	0.313	OR060YMPI
	8"	Nylon	0.313x0.313	32	S0832SN1	NBR	Round	0.400	OR080YMPI
Non-Permanent Standard*	4"	Nylon	0.250 Dia	18	S4518RN0	NBR	Round	0.210	OR040YMNN
	6"	Nylon	0.250 Dia	24	S0624RN0	NBR	Round	0.275	OR060YMNN
	8"	Nylon	0.313x0.313	32	S0832SN1	NBR	Round	0.375	OR080YMNI





Certa-Lok® Yelomine® Specifications & Dimensions Restrained Joint PVC Pressure Piping System

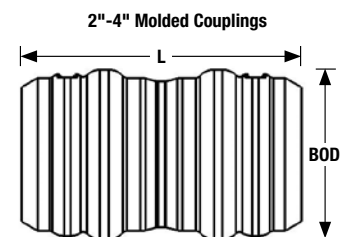
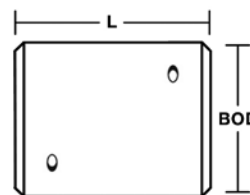
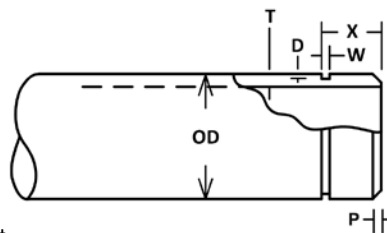


D2241/RJ CERTA-LOK YELOMINE PIPE DIMENSIONS												
Nom. Size	O.D.	Class	Pipe							Coupling		
			Min. Wall Thickness (T1)	Internal Diameter (ID)	X	W	D	P	Weight (lb/ft)	BOD	L	Weight (lb/ft)
2"	2.375	SDR 17#	0.140	2.095	1.750	0.250	0.098	0.182	0.65	3.300	5.485	0.8
3"	3.500	SDR 17#	0.206	3.088	2.500	0.375	0.135	0.182	1.4	4.435	7.200	1.5
4"	4.500	SDR 21#	0.214	4.072	3.000	0.375	0.135	0.182	1.9	5.470	8.250	3.2
		SDR 17	0.265	3.970					2.3			
		SDR 13.5#	0.333	3.834					2.9	5.964	8.250	5.1
		DR 12.43	0.362	3.776					3.0			
6"	6.625	SDR 26	0.255	6.115	3.000	0.375	0.135	0.302	3.3	7.840	8.250	5.7
		SDR 21	0.316	5.993					4.1			
		SDR 17	0.390	5.845					5.0	8.366	8.250	8.6
		SDR 13.5#	0.491	5.643					6.2			
		DR 12.43	0.533	5.559					6.6			
8"	8.625	SDR 26	0.332	7.961	3.163	0.500	0.145	0.631	5.6	10.190	10.125	11.8
		SDR 21	0.410	7.805					6.9			
		SDR 17	0.508	7.609					8.4	10.947	10.125	18.3
		SDR 13.5#	0.639	7.347					10.6			
		DR 12.43	0.694	7.237					11.2			
10"	10.750	SDR 26	0.413	9.924	3.500	0.500	0.215	0.631	8.7	12.438	12.125	18.9
		SDR 21	0.511	9.728					10.7			
12"	12.750	SDR 26	0.490	11.770	3.625	0.750	0.215	0.631	12.3	14.648	12.125	25.3
		SDR 21	0.606	11.538					15.0			
14"	14.000	SDR 26	0.538	12.924	3.500	0.500	0.215	0.631	14.8	16.000	12.125	29.1
16"	16.000	SDR 26	0.615	14.770	3.610	0.750	0.215	0.631	19.3	<i>PVC Coupling</i>		
										17.400	12.125	22.8
		SDR 21	0.762	14.476					23.7	<i>Fiberglass Coupling</i>		
										17.224	12.000	31.5

= Pipe spigot has thickened wall to provide additional joint strength. Ask us for assistance with mandrel sizing if needed.

Notes:

1. These dimensions are for estimating purposes only. All dimensions are in inches unless otherwise specified.
2. SDR = Standard Dimension Ratio
3. ASTM Pressure Rating @ 73°F and includes 2:1 safety factor. Coupling class chosen must meet or exceed pressure rating of pipe alone.
4. Maximum Pull Force includes 2:1 safety factor.
5. Internal diameter calculated using nominal outside diameter and minimum wall thickness.
6. 2"-4" DR17 couplings are molded.





Certa-Lok® Yelomine® Specifications & Dimensions

Restrained Joint PVC Pressure Piping System

D2241/RJ CERTA-LOK YELOMINE ACCESSORIES												
Application	Nom. Size	Couplings ¹			Splines				Gaskets			
		Material	Max. Pressure (psi)	Part Number	Material	Size	Length	Part Number	Material	Shape	Size	Part Number
Permanent Standard	2"	PVC	250	82157715020	Nylon	0.188 Dia.	10.5	S0210RNO	NBR	Round	0.240	OR020YMPI
	3"	PVC	250	82157715037	Nylon	0.250 Dia.	16	S0316RNO	NBR	Round	0.240	OR030YMPI
	4"	PVC	250	82157715044	Nylon	0.250 Dia.	18	S4518RNO	NBR	Round	0.240	OR040YMPI
			350	82157745232	Nylon	0.250x0.250	18	S0418SNO				
	6"	PVC	250	82157715068	Nylon	0.250 Dia.	24	S0624RNO	NBR	Round	0.313	OR060YMPI
			315	82157745249	Nylon	0.250x0.250	24	S0624SNO				
			350	Contact	Contact Customer Service							
	8"	PVC	250	82157715075	Nylon	0.313x0.313	32	S0832SN1	NBR	Round	0.400	OR080YMPI
			315	82157745256				S0832SN1				
			350	Contact	Contact Customer Service				Contact Customer Service			
	10"	PVC	200	82157715105	Nylon	0.375x0.375	39	S1039SNO	IR/SBR	Round	0.438	OR100YMPI
	12"	PVC	200	82157716652	Nylon	0.375x0.625	46	S1246TNO	IR/SBR	Round	0.438	OR120YMPI
	14"	PVC	160	82157745218	Nylon	0.375x0.375	48	S1448SNO	IR/SBR	Round	0.438	OR140YMPI
	16"	PVC	90	82157745225	Nylon	0.375x0.625	60	S1656TNO	IR/SBR	Round	0.438	OR160YMPI
Fiberglass Composite		200	82157745409									
Non-Permanent Standard	2"	PVC	250	82157705021	Nylon	0.188 Dia.	10.5	S0210RNO	NBR	Round	0.210	OR020YMNN
	3"	PVC	250	82157705038	Nylon	0.250 Dia.	16	S0316RNO	NBR	Round	0.210	OR030YMNN
	4"	PVC	250	82157705045	Nylon	0.250 Dia.	18	S4518RNO	NBR	Round	0.210	OR040YMNN
			350	82157745034	Nylon	0.250x0.250	18	S0418SNO				
	6"	PVC	250	82157705069	Nylon	0.250 Dia.	24	S0624RNO	NBR	Round	0.275	OR060YMNN
			315	82157745041	Nylon	0.250x0.250	24	S0624SNO	NBR	Round	0.275	OR060YMNN
			350	82157745096	Nylon	0.250x0.375	32	S0832SN1	NBR	Round	0.275	OR060YMNN
	8"	PVC	250	82157705076	Nylon	0.313x0.313	32	S0832SN1	NBR	Round	0.375	OR080YMNI
			315	82157745058				S0832SN1				
			350	82157745102	Nylon	0.375x0.625	32	S0832TN2				
	10"	PVC	200	82157705106	Nylon	0.375x0.375	39	S1039SNO	IR/SBR	Round	0.407	OR100YMNI
	12"	PVC	200	82157716669	Nylon	0.375x0.625	46	S1246TNO	IR/SBR	Round	0.407	OR120YMNI
	14"	PVC	160	82157745218	Nylon	0.375x0.375	48	S1448SNO	IR/SBR	Round	0.407	OR140YMNI
	16"	PVC	90	82157745027	Nylon	0.375x0.625	60	S1656TNO	IR/SBR	Round	0.407	OR160YMNI
Fiberglass Composite		200	82157745416									

Note:
1. Some coupling sizes are supplied with a molded coupling, instead of a fabricated coupling.





Certa-Lok® Yelomine® Specifications & Dimensions

Restrained Joint PVC Pressure Piping System

CERTA-LOK SPLINE INSERTION TOOL	
Spline Size	Part No.
0.25" Round & 0.25" Square	707964
0.313" Square & 0.313" x 0.375" Rectangle	707971
0.375" Square	707995
0.375" x 0.625" Rectangle	707940

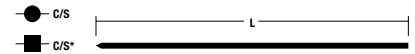
Caution: Care must be taken not to bypass the spline during insertion when using insertion tool.



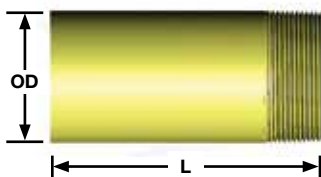
CERTA-LOK SPLINES ACID RESISTANT – PVDF				
Size (in.)	L (in.)	C/S (in.)	Config.	Part No.
2"	10.5	0.188	Round	S0210RV0
3"	16.0	0.250	Round	S0316RV0
4"	18.0	0.250	Round	S0418RV0
6"	24.0	0.250	Round	S0624RV0
8"	32.0	0.313	Square	S0832SV0
10"	39.0	0.375	Square	S1039SV0
12"	46.0	0.375 x 0.625	Rectangle	S1246TV0

See standard Nylon splines on pg. 6

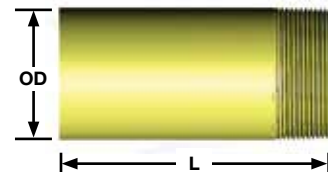
PVDF-Polyvinylidene Fluoride



NIPPLE PE X MIPT					
Size (in.)	PSI	WT./PC (lbs.)	OD (in.)	L (in.)	Part No.
2"	200	0.40	2.375	5.25	705892
3"	190	1.01	3.500	6.50	705908
4"	160	1.60	4.500	7.00	705915
6"	140	3.98	6.625	9.00	705922
8"	120	10.25	8.625	10.40	705939



NIPPLE PE X MIPT					
Size (in.)	PSI	WT./PC (lbs.)	OD (in.)	L (in.)	Part No.
2"	200	0.40	2.375	5.25	705892
3"	190	1.01	3.500	6.50	705908
4"	160	1.60	4.500	7.00	705915
6"	140	3.98	6.625	9.00	705922
8"	120	10.25	8.625	10.40	705939

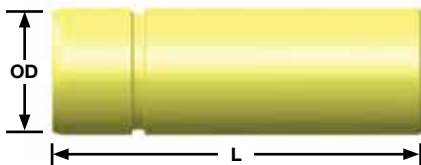




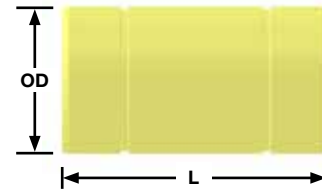
Certa-Lok® Yelomine® Specifications & Dimensions

Restrained Joint PVC Pressure Piping System

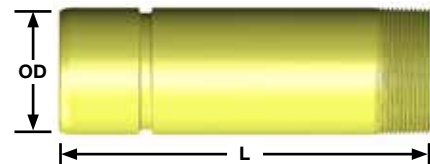
CERTA-LOK NIPPLE C/L MALE x PLAIN END					
Size (in.)	PSI	WT./PC (lbs.)	OD (in.)	L (in.)	Part No.
2"	250	0.60	2.375	7.0	705847
3"	250	1.40	3.500	9.0	705854
4"	250	2.30	4.500	10.0	705861
4" HP	315	3.10	4.500	10.0	706646
6"	250	5.20	6.625	12.0	705878
6" HP	315	7.20	6.625	12.0	706653
8"	250	9.70	8.625	13.0	705885
8" HP	315	13.80	8.625	13.0	706660
10"	200	11.07	10.750	16.0	706325
12"	200	15.50	12.750	16.0	706806
14"	160	20.25	14.000	18.0	706349
16"	200	25.00	16.000	18.0	706356



CERTA-LOK NIPPLE C/L MALE x C/L MALE					
Size (in.)	PSI	WT./PC (lbs.)	OD (in.)	L (in.)	Part No.
4"	250	2.3	4.500	10.0	711008
6"	250	5.2	6.625	12.0	711015
8"	250	9.7	8.625	13.0	711022



CERTA-LOK NIPPLE C/L MALE x MIPT					
Size (in.)	PSI	WT./PC (lbs.)	OD (in.)	L (in.)	Part No.
2"	200	0.60	2.375	7.00	705991
3"	190	1.30	3.500	9.00	706004
4"	160	2.40	4.500	10.00	706011
6"	140	5.20	6.625	12.00	706028
8"	120	9.00	8.625	13.00	706035





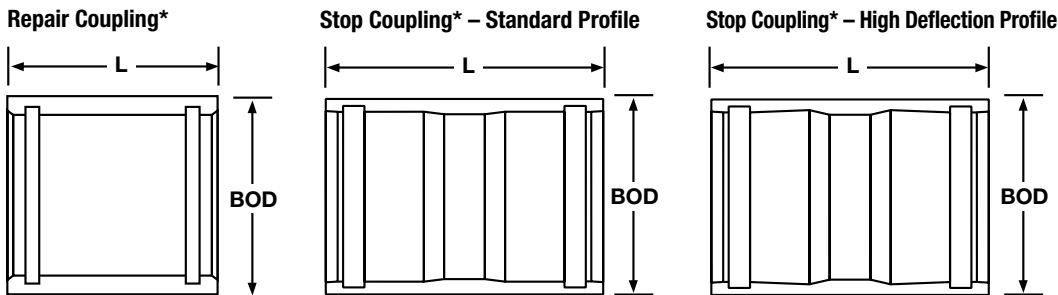
Certa-Lok® Yelomine® Specifications & Dimensions

Restrained Joint PVC Pressure Piping System

FLUID-TITE® PVC COUPLINGS FOR IRON PIPE SIZE (IPS) PVC PIPE									
Nom. Size	Pipe Outside Diameter	Pressure Rating (psi)	BOD	Repair			Stop		
				Length	Weight (lb)	Part Number	Length	Weight (lb)	Part Number
1½"	1.900	250	2.680	9.000	1.2	82157742019	7.063	1.0	82157740206
				18.000	2.5	82157741012			
2"	2.375	250	3.200	9.000	1.6	82157742026	7.000	1.2	82157740213
				18.000	3.2	82157741029			
2½"	2.875	250	3.690	9.000	1.8	82157742033	7.188	1.5	82157740220
				18.000	3.7	82157741036			
3"	3.500	250	4.380	9.000	2.4	82157742040	7.250	1.9	82157740237
				18.000	4.8	82157741043			
4"	4.500	250	5.470	10.500	3.9	82157010541	8.250	3.2	82157010551
				18.000	6.7	82157010546			
6"	6.625	250	7.840	9.000	6.1	82157010542	7.875	5.5	82157010552
				18.000	12.3	82157010547			
8"	8.625	250	10.190	10.125	11.5	82157010543	8.250	9.6	82157010553
				18.000	20.6	82157010548			
10"	10.750	200	12.438	12.125	18.3	82157010544	8.750	13.4	82157010554
				18.000	27.2	82157010549			
12"	12.750	200	14.648	12.125	24.3	82157010545	9.125	18.6	82157010555
				18.000	36.1	82157010550			

Notes:

1. Fluid-Tite Couplings do not utilize a Certa-Lok style joint and are unrestrained, gasketed joints.
2. These dimensions are for estimating purposes only. All dimensions are in inches unless otherwise specified.
3. Coupling pressure rating @ 73°F and includes 2:1 safety factor.
4. All Fluid-Tite Couplings are white in color.



*Included gaskets are not shown in these diagrams.





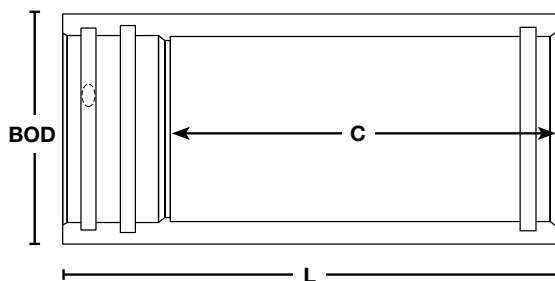
Certa-Lok® Yelomine® Specifications & Dimensions

Restrained Joint PVC Pressure Piping System

D2241 CERTA-LOK® YELOMINE® EXPANSION COUPLINGS												
CERTA-LOK® FEMALE x GASKETED SLIP JOINT												
Nom. Size	Pipe Outside Diameter	Pressure Rating (psi)	Certa-Lok Groove Compatibility		BOD	L	C	Weight (lb)	Part Number			
			D2241 RJ	D2241 RJIB					Permanent Use			Splines
									Fitting*	Certa-Lok Gasket	Slip Joint Gasket	
2"	2.375	250	Yes	N/A	3.200	18.000	15.075	3.2	82157716423	OR020YMPI	GSP2000200	S0210RN0
3"	3.500	250	Yes	N/A	4.380	18.000	14.075	4.9	82157716430	OR030YMPI	GSP2000300	S0316RN0
4"	4.500	250	Yes	Yes	5.470	18.000	13.575	6.8	82157010536	OR040YMPI	GSP2V20400	S4518RN0
6"	6.625	250	Yes**	Yes	7.840	18.000	13.575	12.4	82157010537	OR060YMPI	GSP2V20600	S0624RN0
8"	8.625	250	Yes**	Yes	10.190	18.000	12.688	20.8	82157010538	OR080YMPI	GSP2V20800	S0832SN1
10"	10.750	200	Yes	N/A	12.438	18.000	11.325	27.7	82157010539	OR100YMPI	GSP2V21000	S1039SN0
12"	12.750	200	Yes	N/A	14.648	18.000	11.325	36.9	82157010540	OR120YMPI	GSP2V21200	S1246TN0
16"	16.000	90	Yes	N/A	17.400	18.000	11.500	33.7	82157716539	OR160YMPI	OR160YMPI	S1656TN0

* Includes permanent style gaskets and splines

** Not compatible with D2241/RJ DR 12.43 pipe



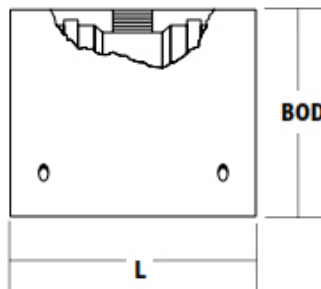


Certa-Lok® Yelomine® Specifications & Dimensions

Restrained Joint PVC Pressure Piping System

D2241 CERTA-LOK® YELOMINE® TAPPED COUPLINGS CERTA-LOK® FEMALE X CERTA-LOK® FEMALE X NPT TAPPED HOLE											
Nom. Size	Pipe Outside Diameter	Tapped Hole Size	Pressure Rating (psi)	Certa-Lok Groove Compatibility		BOD	L	Weight (lb)	Part Number		
				D2241 RJ	D2241 RJIB				Non-Permanent Use		Splines
									Fitting*	Gasket	
2"	2.375	3/4" NPT	200	Yes	N/A	3.200	7.000	1.3	82157705403	OR020YMNN	S0210RNO
		1" NPT	200	Yes	N/A	3.200	7.000	1.3	82157705441		
3"	3.500	3/4" NPT	200	Yes	N/A	4.380	9.500	2.7	82157705410	OR030YMNN	S0316RNO
		1" NPT	200	Yes	N/A	4.380	9.500	2.7	82157705458		
		1-1/2" NPT	160	Yes	N/A	4.380	9.500	2.7	82157705465		
4"	4.500	1/2" NPT	200	Yes	Yes	5.470	10.500	4.2	82157716560	OR040YMNN	S4518RNO
		3/4" NPT	200	Yes	Yes	5.470	10.500	4.2	82157705427		
		1" NPT	200	Yes	Yes	5.470	10.500	4.2	82157705472		
		1-1/2" NPT	200	Yes	Yes	5.470	10.500	4.1	82157705489		
		1-1/2" NPT	250	Yes	Yes	5.964	10.500	6.5	82157706585		
6"	6.625	3/4" NPT	200	Yes**	Yes	7.840	11.250	8.1	82157705434	OR060YMNN	S0624RNO
		1" NPT	200	Yes**	Yes	7.840	11.250	8.1	82157705496		
		1-1/2" NPT	200	Yes**	Yes	7.840	11.250	8.1	82157705502		
		1-1/2" NPT	250	Yes**	Yes	8.366	11.250	11.9	82157706592		
		2" NPT	160	Yes**	Yes	7.840	11.250	8.0	82157705540		
8"	8.625	1" NPT	200	Yes**	Yes	10.190	12.500	15.1	82157705519	OR080YMNI	S0832SN1
		1-1/2" NPT	200	Yes**	Yes	10.190	12.500	15.0	82157705526		
		1-1/2" NPT	250	Yes**	Yes	10.947	12.500	22.9	82157715778		
		2" NPT	160	Yes**	Yes	10.190	12.500	15.0	82157705533		
		3" NPT	130	Yes**	Yes	10.190	13.500	16.1	82157705588		
10"	10.750	1-1/2" NPT	200	Yes	N/A	12.438	15.000	23.8	82157707858	OR100YMNI	S1039SNO
12"	12.750	2" NPT	160	Yes	N/A	14.648	15.000	31.8	82157707803	OR120YMNI	S1246TNO

* Includes non-permanent style gasket and spline
 ** Not compatible with D2241/RJ DR 12.43 pipe

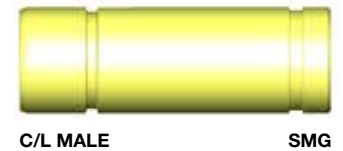
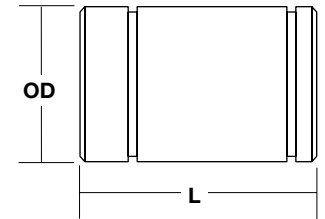




Certa-Lok® Yelomine® Specifications & Dimensions

Restrained Joint PVC Pressure Piping System

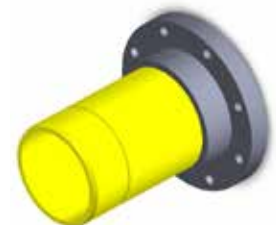
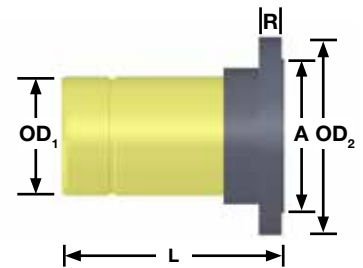
CERTA-LOK TRANSITION FITTING C/L MALE x STANDARD METAL GROOVE (SMG)					
Size (in.)	PSI	WT./PC (lbs.)	OD (in.)	L (in.)	Part No.
2"	**	0.60	2.375	7.0	710315
3"	**	1.60	3.500	9.0	710322
4"	**	2.50	4.500	10.0	710339
4" HP	**	3.10	4.500	10.0	706523
6"	**	5.20	6.625	12.0	710346
6" HP	**	7.20	6.625	12.0	706530
8"	**	9.00	8.625	13.5	710353
10"	**	11.07	10.750	16.0	707834
12"	**	19.20	12.750	16.0	707841
14"	**	20.25	14.000	18.0	710360
16"	**	25.00	16.000	18.0	710377



* Caution: Certa-Lok to "SMG" Adapters, when assembled with the proper Victaulic, Grinnell or similar coupling, have long-term hydrostatic strengths equal to all other Certa-Lok fittings. However, the resistance of the grooved adapter and coupling assembly to thrust loads is significantly less than that of Certa-Lok couplings. Therefore, these adapters should be supported against thrust loads.

**Unrestrained pressure rating (PSI) to be determined by the Victaulic coupling or similar coupling manufacturer, as each manufacturer's rating may be different due to design.

CERTA-LOK FLANGE ADAPTER C/L MALE x FLANGE									
Size (in.)	PSI	WT./PC (lbs.)	OD ₁ (in.)	OD ₂ (in.)	Norm. R. (in.)	L (in.)	Bolt Circle Dia. A (in.)	No. Holes	Part No.
2"	150	1.60	2.375	6.00	0.813	7.19	4.75	4	705748
3"	150	3.20	3.500	7.50	1.063	9.25	6.00	4	705755
4"	150	5.00	4.500	9.00	1.125	10.25	7.50	8	705762
6"	150	9.00	6.625	11.00	1.281	12.44	9.50	8	705779
8"	150	16.00	8.625	13.50	1.375	13.38	11.75	8	705786
10"	150	25.40	10.750	16.00	1.625	16.69	14.25	12	707773
12"	150	36.70	12.750	19.00	1.500	16.63	17.00	12	707780
14"	150	75.00	14.000	21.00	2.000	18.50	18.75	12	706479
16"	150	105.00	16.000	23.50	2.375	18.75	21.25	16	706486



All flanges are Van Stone style and utilize a glass-filled PVC ring.

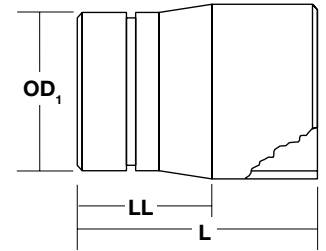




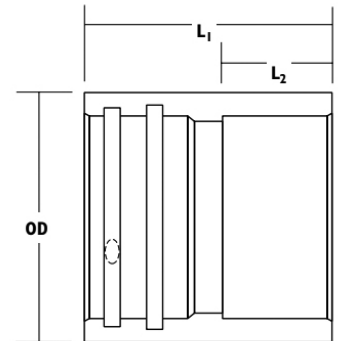
Certa-Lok® Yelomine® Specifications & Dimensions

Restrained Joint PVC Pressure Piping System

CERTA-LOK ADAPTER C/L MALE x SOLVENT WELD BELL						
Size (in.)	PSI	WT./PC (lbs.)	OD ₁ (in.)	L (in.)	LL (in.)	Part No.
2"	250	0.50	2.375	6.625	4.125	705304
3"	250	1.40	3.500	8.625	5.125	705311
4"	250	2.30	4.500	9.250	4.875	705328
4" HP	315	6.10	4.500	9.250	4.875	706493
6"	250	5.30	6.625	11.375	5.375	705335
6" HP	315	10.70	6.625	11.375	5.375	706509
8"	250	9.00	8.625	12.875	6.875	705342
8" HP	315	18.60	8.625	12.875	6.875	706516
10"	200	11.00	10.750	15.250	9.250	705168
12"	200	15.00	12.750	15.250	9.250	705175



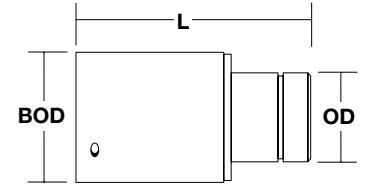
CERTA-LOK X SOLVENT WELD COUPLING C/L FEMALE x SOLVENT WELD SOCKET END							
Size (in.)	PSI	WT./PC (lbs.)	L ₁	L ₂	O.D.	Part No.	
						Non Perm. Use	Perm. Use
2"	250	1.00	5.50	2.375	3.20	705359	715358
3"	250	2.20	8.00	3.500	4.38	705366	715365
4"	250	3.50	9.00	4.000	5.47	705373	715372
6"	250	6.40	9.00	4.000	7.84	705380	715389
8"	250	11.30	10.13	4.500	10.19	705397	715396
10"	200	16.00	12.13	5.750	12.44	705083	715082
12"	200	17.80	12.13	5.750	14.65	705090	715099
14"	160	36.60	12.13	5.750	16.00	705205	715129
16"	90	22.00	12.13	5.750	17.40	705212	715136





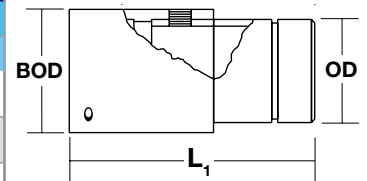
Certa-Lok® Yelomine® Specifications & Dimensions Restrained Joint PVC Pressure Piping System

CERTA-LOK REDUCER C/L FEMALE x C/L MALE							
Size (in.)	PSI	WT./PC (lbs.)	OD (in.)	BOD (in.)	L (in.)	Part No.	
						Non Perm. Use	Perm. Use
3" x 2"	250	4.30	2.375	4.380	13.88	706134	—
4" x 2"	250	5.00	2.375	5.470	15.25	706141	716140
4" x 3"	250	5.70	3.500	5.470	16.56	706158	716157
6" x 2"	250	10.40	2.375	7.840	15.75	706165	716164
6" x 3"	250	11.00	3.500	7.840	16.50	706318	716317
6" x 4"	250	11.10	4.500	7.840	17.38	706172	716171
8" x 2"	250	11.10	2.375	10.190	17.00	706189	716188
8" x 4"	250	24.10	4.500	10.190	15.63	706196	716195
8" x 6"	250	24.60	6.625	10.190	18.50	706202	716201
10" x 8"	200	42.00	8.625	12.440	19.75	706219	716218
12" x 8"	200	54.00	8.625	14.650	19.25	706226	716225
12" x 10"	200	44.10	10.750	14.650	22.25	706257	—
14" x 12"	160	52.20	12.750	16.000	22.25	706233	716232
16" x 10"	90	27.00	10.750	17.400	24.25	707025	—
16" x 12"	90	70.35	12.750	17.400	24.25	706400	—



Certa-Lok Female X Male and
Tapped Female X Male couplings
are fabricated

CERTA-LOK TAPPED COUPLING C/L FEMALE x C/L MALE • FIPT OUTLET								
Size (in.)	PSI	WT./PC (lbs.)	Outlet Size (in.)	OD (in.)	BOD (in.)	L (in.)	Part No.	
							Non Perm. Use	Perm. Use
2" x 2"	250	1.60	0.75	2.375	3.20	10.13	700651	710650
2" x 2"	250	1.50	1.00	2.375	3.20	10.13	700668	710667
3" x 3"	250	3.60	1.50	3.500	4.38	13.50	705687	715686
4" x 4"	250	5.80	1.50	4.500	5.47	15.00	705694	715693
6" x 6"	250	11.50	1.50	6.625	7.84	17.00	700569	710568
6" x 6"	250	11.40	2.00	6.625	7.84	17.00	700576	710575
8" x 8"	250	20.60	1.50	8.625	10.19	19.00	705724	715723
8" x 8"	250	21.40	2.00	8.625	10.19	19.00	705731	715730
10" x 10"	200	27.00	2.00	10.750	12.44	22.25	705663	715662
12" x 12"	200	33.00	2.00	12.750	14.65	22.25	705670	715679



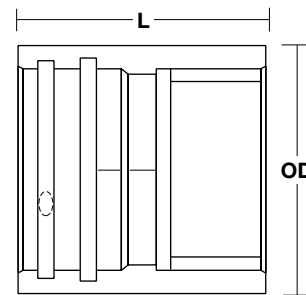
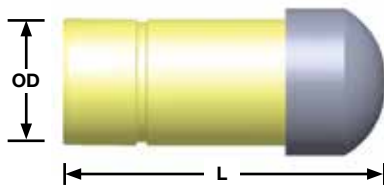


Certa-Lok® Yelomine® Specifications & Dimensions

Restrained Joint PVC Pressure Piping System

CERTA-LOK END PLUG					
Size (in.)	PSI	WT./PC (lbs.)	OD (in.)	L (in.)	Part No.
2"	250	0.90	2.375	7.50	704987
3"	250	2.00	3.500	10.00	704994
4"	250	3.70	4.500	11.00	706288
4" HP	315	4.40	4.500	11.00	706639
6"	250	8.50	6.625	14.00	706295
8"	200	16.20	8.625	17.50	706301

CERTA-LOK END CAP					
Size (in.)	PSI	WT./PC (lbs.)	OD (in.)	L (in.)	Part No. Non Perm.
4"	250	4.20	5.47	9.00	700002
6"	250	9.00	7.84	9.00	700019
8"	250	17.00	10.19	12.125	700026
10"	200	22.00	12.638	12.125	700033
12"	200	28.00	14.668	12.125	700040

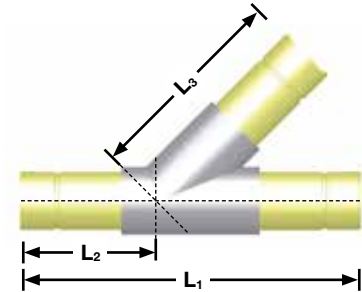




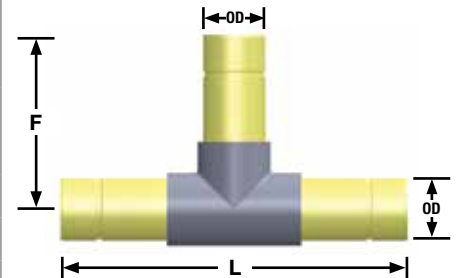
Certa-Lok® Yelomine® Specifications & Dimensions Restrained Joint PVC Pressure Piping System

Certa-Lok Wyes, Tees, Reducing Tees, Caps, 45° Elbows and 90° Elbows are fabricated using solvent welded ASTM D1785 Sch. 80 socketed fittings which are black in color and are not made of Yelomine PVC compound.

CERTA-LOK WYES C/L MALE x C/L MALE x C/L MALE						
Size (in.)	PSI	WT./PC (lbs.)	Dimensions (in.)			Part No.
			L ₁	L ₂	L ₃	
4"	150	11.00	26.25	10.78	16.03	707018
6"	150	27.70	33.88	13.41	20.63	706677
8"	100	69.00	44.75	18.06	26.69	706721



CERTA-LOK TEE C/L MALE x C/L MALE x C/L MALE						
Size (in.)	PSI	WT./PC (lbs.)	OD (in.)	L (in.)	F (in.)	Part No.
2" x 2" x 2"	250	2.30	2.375	16.50	10.88	704918
3" x 3" x 3"	250	5.80	3.500	21.50	11.25	704925
4" x 4" x 4"	250	10.70	4.500	24.75	12.38	704628
4" x 4" x 4" HP	315	12.90	4.500	24.75	12.38	706608
6" x 6" x 6"	250	25.00	6.625	31.00	15.50	704635
8" x 8" x 8"	250	48.00	8.625	36.25	17.75	704642
10" x 10" x 10"	200	63.00	10.750	45.38	22.70	704581
12" x 12" x 12"	200	86.00	12.750	45.00	22.50	704598
14" x 14" x 14"	160	164.30	14.000	52.00	26.00	704529
16" x 16" x 16"	200	216.00	16.000	54.00	27.00	704536



Note: Also available on special order with pipe threaded branch in size 2" through 8"



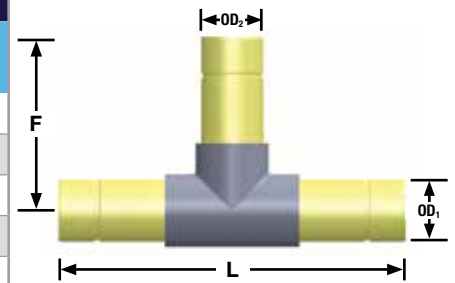


Certa-Lok® Yelomine® Specifications & Dimensions

Restrained Joint PVC Pressure Piping System

Certa-Lok Wyes, Tees, Reducing Tees, Caps, 45° Elbows and 90° Elbows are fabricated using solvent welded ASTM D1785 Sch. 80 socketed fittings which are black in color and are not made of Yelomine PVC compound.

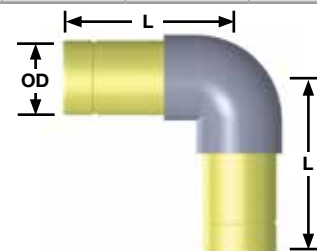
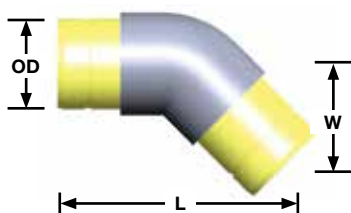
CERTA-LOK REDUCING TEE C/L MALE x C/L MALE x C/L MALE							
Size (in.)	PSI	WT./PC. (lbs.)	OD ₁ (in.)	OD ₂ (in.)	L (in.)	F (in.)	Part No.
3" x 3" x 2"	250	5.00	3.500	2.375	21.00	8.84	704932
4" x 4" x 2"	250	10.10	4.500	2.375	22.88	9.47	704673
4" x 4" x 3"	250	10.80	4.500	3.500	24.19	11.66	704680
6" x 6" x 2"	250	23.83	6.625	2.375	28.13	11.63	704697
6" x 6" x 3"	250	24.20	6.625	3.500	28.13	12.75	704703
6" x 6" x 4"	250	24.40	6.625	4.500	29.19	13.75	704710
8" x 8" x 6"	250	50.90	8.625	6.625	33.50	16.81	704727
10" x 10" x 6"	200	62.10	10.750	6.625	39.75	17.84	704543
12" x 12" x 4"	200	87.00	12.750	4.500	42.75	16.75	704505
12" x 12" x 6"	200	89.40	12.750	6.625	47.00	21.75	704567
12" x 12" x 8"	200	98.60	12.750	8.625	41.56	24.63	704574



Note: Also available on special order with pipe threaded branch in size 2" through 8"

CERTA-LOK 45° ELLS C/L MALE x C/L MALE						
Size (in.)	PSI	WT./PC (lbs.)	OD (in.)	L (in.)	W (in.)	Part No.
2"	250	1.60	2.375	12.964	5.370	704949
3"	250	3.90	3.500	16.858	6.983	704956
4"	250	7.10	4.500	18.939	7.845	704826
4" HP	315	8.60	4.500	18.939	7.845	706615
6"	250	16.10	6.625	23.473	9.723	704833
8"	250	30.90	8.625	25.607	10.607	704840
10"	200	37.00	10.750	31.750	13.150	704789
12"	200	65.00	12.750	32.600	13.500	704796
14"	160	82.00	14.000	37.750	15.650	705007
16"	200	144.00	16.000	39.800	16.500	705014

CERTA-LOK 90° ELLS C/L MALE x C/L MALE					
Size (in.)	PSI	WT./PC (lbs.)	OD (in.)	L (in.)	Part No.
2"	250	1.70	2.375	8.44	704963
3"	250	4.10	3.500	11.06	704970
4"	250	7.50	4.500	12.63	704888
4" HP	315	10.00	4.500	12.63	706622
6"	250	17.40	6.625	15.75	704895
8"	250	33.70	8.625	17.75	704901
10"	200	65.00	10.750	21.78	704765
12"	200	83.00	12.750	22.88	704772
14"	160	141.50	14.000	31.50	704741
16"	200	172.40	16.000	33.50	704758





Certa-Lok® Yelomine® Specifications & Dimensions

Restrained Joint PVC Pressure Piping System

D2241 CERTA-LOK YELOMINE SWEEPS CERTA-LOK MALE X CERTA-LOK MALE									
Nom. Size	Pressure Rating (psi)	Certa-Lok Groove Compatibility		OD	Angle (deg)	L	W	Weight (lb)	Part Number
		D2241/RJ	D2241/RJIB						
2"	250	Yes	N/A	2.375	22.5	17.340	3.449	1.4	82157710780
					45	18.108	7.501	1.7	82157710834
					90	16.703	16.703	2.4	82157710889
3"	250	Yes	N/A	3.500	22.5	26.022	5.176	4.4	82157710797
					45	25.974	10.759	4.8	82157710841
					90	23.146	23.146	6.8	82157710896
4"	250	Yes	Yes	4.500	22.5	26.048	5.181	7.9	82157710803
					45	28.727	11.899	9.6	82157710858
					90	30.273	30.273	15.8	82157710902
6"	250	Yes**	Yes	6.625	22.5	28.962	5.761	17.6	82157710810
					45	39.181	16.229	26.4	82157710865
					90	42.007	42.007	44.1	82157710919
8"	250	Yes**	Yes	8.625	22.5	43.393	8.631	44.7	82157710827
					45	52.003	21.540	59.8	82157710872
					90	46.614	46.614	83.8	82157710926
10"	160	Yes	N/A	10.750	22.5	69.417	13.808	63.6	82157705236
					45	72.874	30.185	74.3	82157705250
					90	71.367	71.367	114.5	82157705267
12"	160	Yes	N/A	12.750	22.5	69.427	13.810	89.5	82157705243
					45	72.947	30.216	104.5	82157705274
					90	71.796	71.796	161.0	82157705281
16"	160	Yes	N/A	16.000	22.5	83.876	16.684	171.0	82157706424
					45	85.897	35.580	194.8	82157706448
					90	78.655	78.655	277.9	82157706462

** Not compatible with D2241/RJ DR 12.43 pipe

