



Certa-Lok®/IB & Certa-Lok® CLIC™ Compatibility

Key differences between Certa-Lok/IB and Certa-Lok CLIC:

1. The splines are not backwards compatible. You cannot insert a traditional Certa-Lok/IB spline into a Certa-Lok CLIC joint. Additionally, you cannot remove and install a Certa-Lok CLIC spline into a traditional Certa-Lok/IB joint. You can confirm if you have Certa-Lok CLIC casing on the print line of the casing.
2. It is **highly recommended** that you use a NAPCO approved lubricant to lubricate the Certa-Lok CLIC joint. For full instructions on lubricating the joint, refer to the Certa-Lok CLIC Well Casing Brochure on our website here: <https://napcopipe.com/en/product/pipe/certa-lokr-well-casing/certa-lokr-clictm-well-casing>
3. The 4", 6", and 6.9" nominal sizes of Certa-Lok/IB utilize a spline groove that is closer to the end of the pipe as shown below in figure 1. Because of this, in order to connect 4", 6", or 6.9" Certa-Lok CLIC casing to 4", 6", and 6.9" Certa-Lok/IB casing, you must use a Certa-Lok/IB to Certa-Lok CLIC adapter. The part numbers are included in the table below.
4. The spigot ends for all nominal sizes except 4", 6", and 6.9" are the same between Certa-Lok/IB and Certa-Lok CLIC. You can insert either spigot into either bell and successfully join the two types of casing.

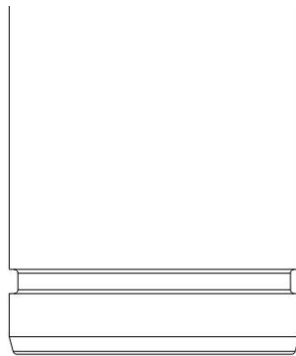


Figure 1. 4", 6", and 6.9" Certa-Lok/IB spigot end.

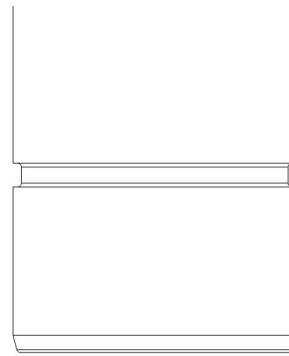
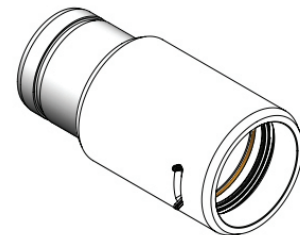


Figure 2. Certa-Lok CLIC spigot end.

CERTA-LOK/IB MALE X CERTA-LOK CLIC FEMALE WELL CASING ADAPTER				
Nominal Size	Weight (lbs.)	Length (in.)	OD (in.)	Part No.
4	3.84	11.125	4.950	745770
6	7.28	11.875	7.600	745771
6.9	8.32	13.125	7.840	745772



Questions? Contact NAPCO Technical Services at 855-624-7473 options 3 or email technical@napcopipe.com.