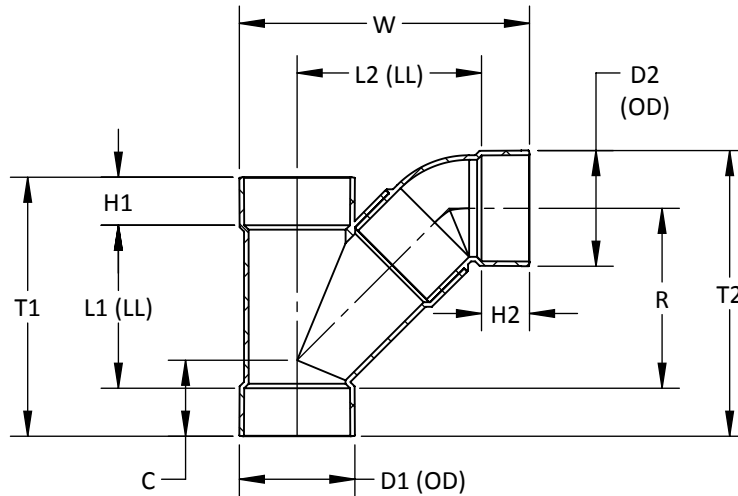


ASSEMBLED FROM
MOLDED COMPONENTS



ASTM D2665, F1866, CSA B181.2 WHERE APPLICABLE

**COMBO WYE & 1/8 BEND HxHxH (2 PIECE)
PVC SOLVENT WELD DWV**

PART NO.	SIZE IN INCHES	L1	L2	H1	H2	C	T1	T2	W	R	D1	D2
† D1654	4 x 4	8 1/4	9 17/32	1 25/32	1 25/32	3 5/8	11 13/16	13 1/2	13 13/16	9 7/32	5 1/32	5 1/32
† D1656-4	6 x 4	6 3/4	10 1/4	3 1/16	1 25/32	3 3/16	12 7/8	13 25/32	15 5/8	8 7/32	7 7/32	5 1/32
† D1656	6 x 6	10 1/16	11 15/32	3 1/16	3 1/16	4 3/4	16 3/16	17 3/4	18 1/8	11 3/32	7 7/32	7 7/32
† D1658-4	8 x 4	6 13/16	9 17/32	4 1/16	1 25/32	3 1/4	14 15/16	14 1/16	15 31/32	7 1/2	9 11/32	5 1/32
† D1658-6	8 x 6	8 31/32	12 17/32	4 1/16	3 1/16	4 19/32	17 3/32	18 25/32	20 1/4	11 1/8	9 11/32	7 7/32
† D1658	8 x 8	14 3/16	14 23/32	4 1/16	4 1/16	6 1/2	22 5/16	23 29/32	23 7/16	15 3/16	9 11/32	9 11/32
† D16510-4	10 x 4	6 7/8	10 19/32	5 1/16	1 25/32	3 3/8	17	15 1/4	18 1/8	7 11/16	11 17/32	5 1/32
† D16510-6	10 x 6	9 3/4	13 15/32	5 1/16	3 1/16	5	19 7/8	20 3/32	22 9/32	11 7/16	11 17/32	7 7/32
† D16510-8	10 x 8	12 7/16	15 3/32	5 1/16	4 1/16	6 1/16	22 9/16	23 5/8	24 29/32	13 29/32	11 17/32	9 11/32
† D16510	10 x 10	15 3/8	18 21/32	5 1/16	5 1/16	7 15/32	25 1/2	28 21/32	29 15/32	17 27/32	11 17/32	11 17/32
† D16512-4	12 x 4	7	13 7/16	6 1/16	1 25/32	3 11/32	19 1/8	17 1/16	22	8 1/2	13 19/32	5 1/32
† D16512-6	12 x 6	9 13/16	14 11/16	6 1/16	3 1/16	4 13/16	21 15/16	21 3/32	24 17/32	11 7/16	13 19/32	7 7/32
† D16512-8	12 x 8	12 5/8	16 5/32	6 1/16	4 1/16	6 5/32	24 3/4	24 31/32	27	14 1/4	13 19/32	9 11/32
† D16512-10	12 x 10	15 7/16	19 3/4	6 1/16	5 1/16	7 19/32	27 9/16	29 27/32	31 19/32	18 1/32	13 19/32	11 17/32
† D16512	12 x 12	18 1/4	21 7/16	6 1/16	6 1/16	9 1/2	30 3/8	33 3/4	34 9/32	20 29/32	13 19/32	13 19/32

-- DIMENSIONS AND APPEARANCE ARE APPROXIMATE AND SUBJECT TO CHANGE
WITHOUT NOTICE DUE TO DESIGN OR PRODUCTION MODIFICATIONS
-- MOLDED FITTING TOLERANCE = ±1/8" OVERALL LENGTH
-- FABRICATED FITTING TOLERANCE = ±1" LINEAR, ± 2° ANGULAR

* MOLDED FITTING
† ASSEMBLED FROM MOLDED COMPONENTS
ALL OTHER FITTINGS ARE FABRICATED