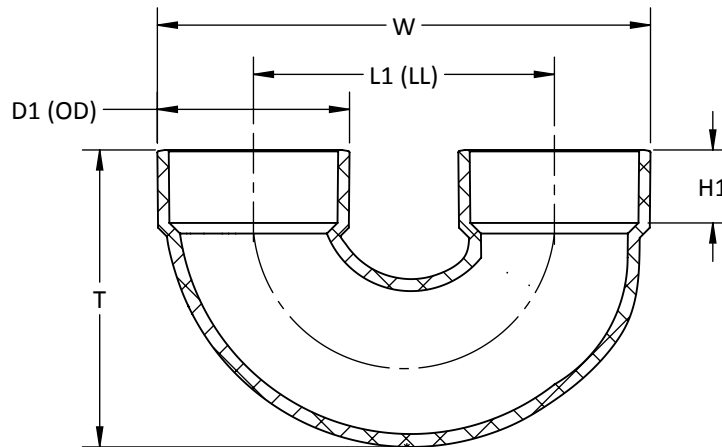


MOLDED



ASTM D2665, F1866,  
CSA B181.2 WHERE APPLICABLE

**U-BEND HxH  
PVC SOLVENT WELD DWV**

PART NO.	SIZE IN INCHES	L1	H1	T	W	D1
* D1833	3 x 3	6 9/32	1 17/32	6 5/32	10 1/4	3 31/32
* D1844	4 x 4	8 3/32	1 25/32	7 3/4	13 1/8	5 1/32
* D1866	6 x 6	12 1/8	3 1/32	11 19/32	19 11/32	7 7/32

-- DIMENSIONS AND APPEARANCE ARE APPROXIMATE AND SUBJECT TO CHANGE  
WITHOUT NOTICE DUE TO DESIGN OR PRODUCTION MODIFICATIONS  
-- MOLDED FITTING TOLERANCE = ±1/8" OVERALL LENGTH  
-- FABRICATED FITTING TOLERANCE = ±1" LINEAR, ± 2° ANGULAR

\* MOLDED FITTING  
† ASSEMBLED FROM MOLDED COMPONENTS  
ALL OTHER FITTINGS ARE FABRICATED